

D19

Stainless Steel, Fire Rated Glands Installation Guide

TriCab Stainless Glands are precision engineered from 316 Stainless Steel and suitable for weatherproof enclosures and harsh environments.

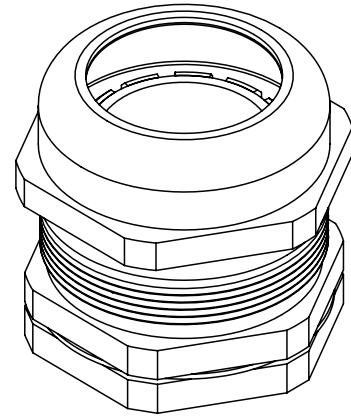
These glands contain Rubber Inserts made from Low Smoke Zero Halogen material and therefore are ideal for use with Fire-Rated Cables

Typical applications include:

- Marine/Offshore
- Food/Beverage
- Pharmaceuticals
- Industrials

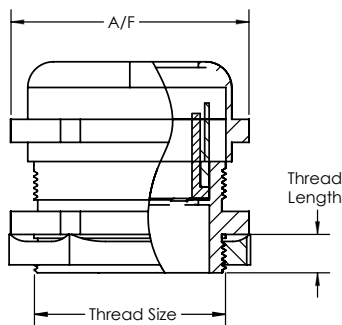
Materials

- Stainless Steel Body
- V0 Rubber Insert



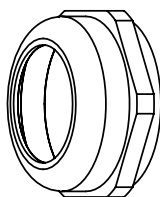
Standards

- AS/NZS 60529, IEC 60529, EN 60529

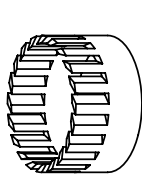


Product Code	Range of Cable Dia (mm)	Thread Size	Thread Length (mm)	Wrench A/F Size Nut/Body/LockNut (mm)
D19-AHXX/12F6	3-6.5	M12x1.5	7.0	22/22/20
D19-AGXX/16F10	6-10	M16x1.5	9.0	22/22/20
D19-AGXX/20F14	9-14	M20x1.5	9.5	26/26/26
D19-AGXX/25F18	14-18	M25x1.5	12.0	32/32/32
D19-AGXX/32F25	18-25	M32x1.5	12.0	40/40/38
D19-AGXX/40F31	24-31	M40x1.5	15.0	50/50/46
D19-ADXX/50F41	31-41	M50x1.5	15.0	60/60/60
D19-ADXX/63F45	39-45	M63x1.5	15.0	75/74/70

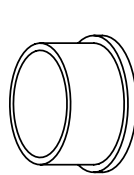
Sealing Nut



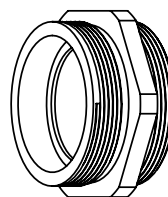
Claw



Seal



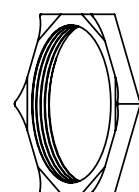
Body



Seal Ring



Lock Nut



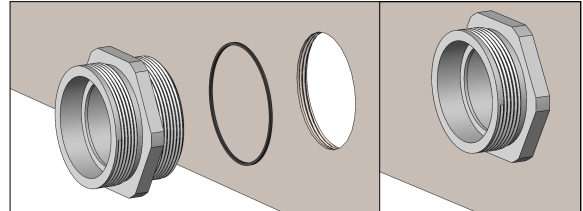
This Installation Guide was designed with great care and proper testing before publication to ensure the product works perfectly with TriCab flexible cables. TriCab is not liable for any errors, omissions, damages etc. due to improper use of this product, included but not limited to improper installation deviating from this Guide, safety and warning rules violation, using unsuitable cable other than TriCab flexible cable. TriCab reserves the right to modify this Installation Guide at any time without prior notice.

D19

Stainless Steel, Fire Rated Glands Installation Guide

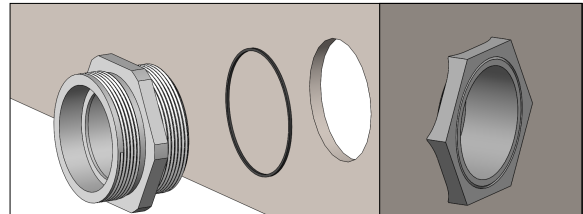
1. Remove **gland body** from **lock nut, seal, claw** and **sealing nut**.

2. Option 1: Screw the **gland body** with **seal ring** into the corresponding thread hole on gland plate.

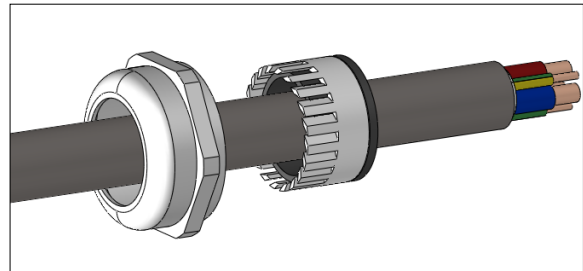


3. Option 2: Fit the **gland body** with **seal ring** to the clearance hole on gland plate. Use a spanner to tighten the **lock nut** on the other side of gland plate to **gland body**.

It is recommended that clearance hole diameter should not be more than 0.7mm to major thread diameter on gland to maintain IP rating. Refer to enclosure manufacturer instruction for more detail.



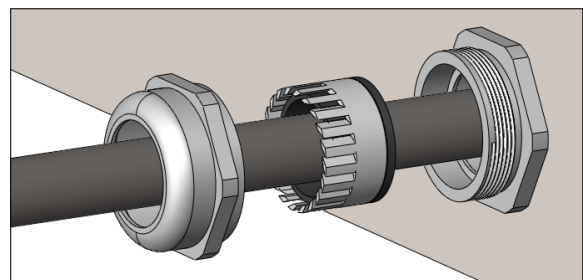
4. Strip the cable at desired lengths. Insert **sealing nut, seal** and **claw** through the cable.



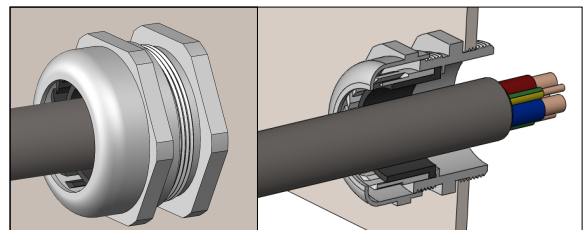
5. Insert cable through the **gland body**. Adjust **sealing nut, claw** and **seal** to the correct disassembled orientation.

Move the cable forward to ensure that the outer sheath completely passes the **seal** and **claw** section.

Manually tighten the **sealing nut** for temporary fixing.



6. Use a spanner to tighten the **sealing nut** until cable is fixed securely. Double check the cable connection and position if necessary.



This Installation Guide was designed with great care and proper testing before publication to ensure the product works perfectly with TriCab flexible cables. TriCab is not liable for any errors, omissions, damages etc. due to improper use of this product, included but not limited to improper installation deviating from this Guide, safety and warning rules violation, using unsuitable cable other than TriCab flexible cable. TriCab reserves the right to modify this Installation Guide at any time without prior notice.