

D15

Brass, Nickel Plated SWA Gland Installation Guide

TRICAB's Brass SWA Cable glands are generally used with Steel/ Aluminium wire armored cables.

The glands secure the cable armor and the outer rubber seal grips the cable sheath to ensure a mechanically strong connection while providing earth continuity.

The glands are Nickel Plated and are suitable for both indoor and outdoor use.

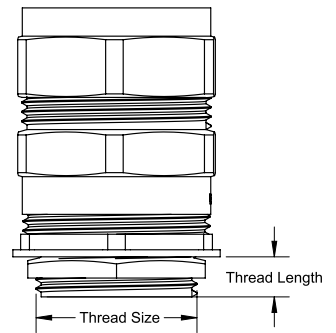
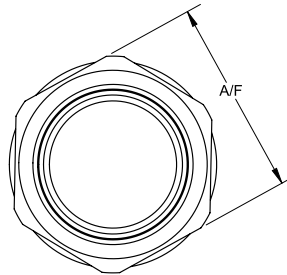
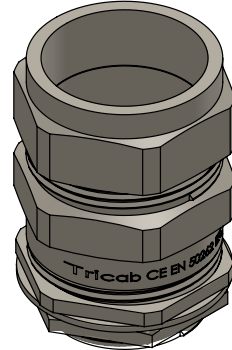
PVC Shroud and Earth Tag Included.

Materials

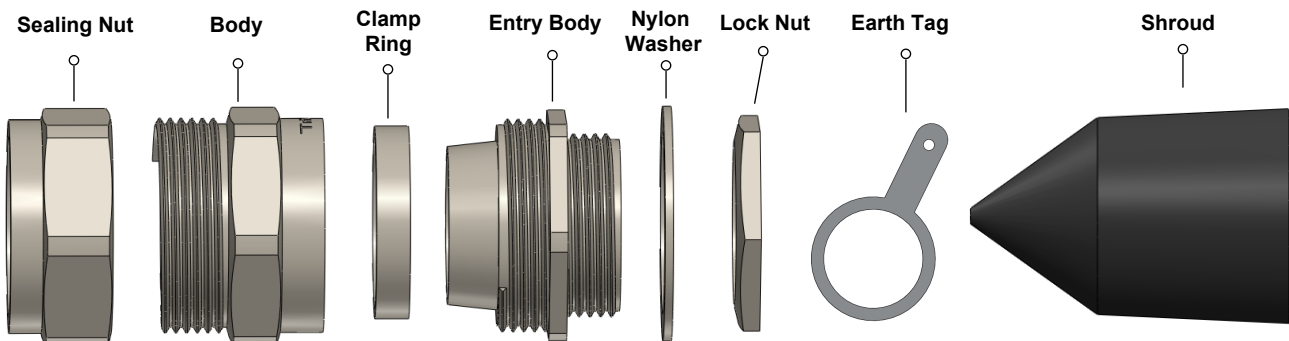
- Nickel Plated Brass body

Standards

- BS 6121



Product Code	Cable Ø Range	Max Bedding Ø	Wire Armour Ø	Thread Size	Thread Length	A/F
	mm	mm	mm	mm	mm	mm
D15-AAXX/20F20	14-20.5	14	0.9-1.25	M25 x 1.5	10	26
D15-AAXX/25F26	20-27	20	1.25-1.6	M25 x 1.5	10	35
D15-AAXX/32F33	26.3-33.5	26.3	1.6-2.0	M32 x 1.5	10	41
D15-AAXX/40F40	32-40	32	1.6-2.0	M40 x 1.5	13	49
D15-AAXX/50F46	38.2-46.3	38.2	2.0-2.5	M50 x 1.5	13	57.5
D15-AAXX/50F52	44-52.6	44	2.0-2.5	M50 x 1.5	13	62.5
D15-AAXX/63F59	50.1-59	50.1	2.5	M63 x 1.5	14	73
D15-AAXX/63F65	56-65.3	56	2.5	M63 x 1.5	14	76



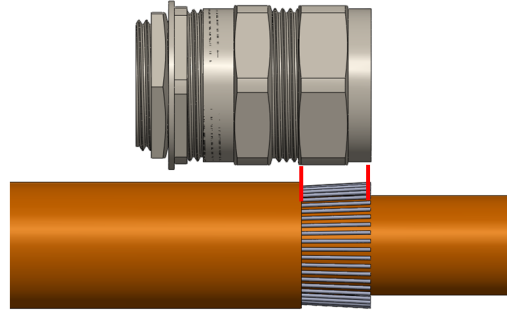
This Installation Guide was designed with great care and proper testing before publication to ensure the product works perfectly with TriCab flexible cables. TriCab is not liable for any errors, omissions, damages etc. due to improper use of this product, included but not limited to improper installation deviating from this Guide, safety and warning rules violation, using unsuitable cable other than TriCab flexible cable. TriCab reserves the right to modify this Installation Guide at any time without prior notice.

D15

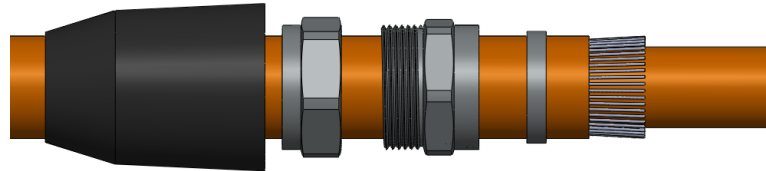
Brass, Nickel Plated SWA Gland Installation Guide

1. Select the suitable gland based on the Cable outer diameter and bedding diameter. Disassemble the gland to the components shown in page 1.

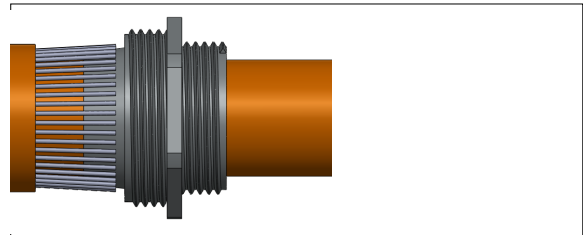
2. Remove the Cable Jacket to expose the armour and bedding. Break off the armour to leave a length not more than the **Sealing Nut**.



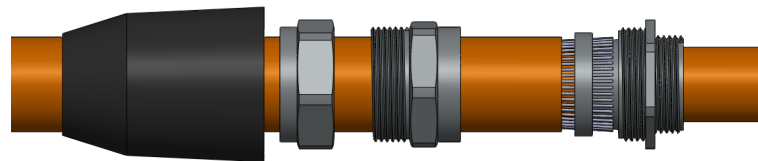
3. Cut open the tail end of the **Shroud** to leave an opening that is equivalent to the outer jacket diameter of the cable. Slide the **Shroud**, **Sealing Nut**, **Gland Body** and **Clamp Ring** through the outer jacket of the cable.



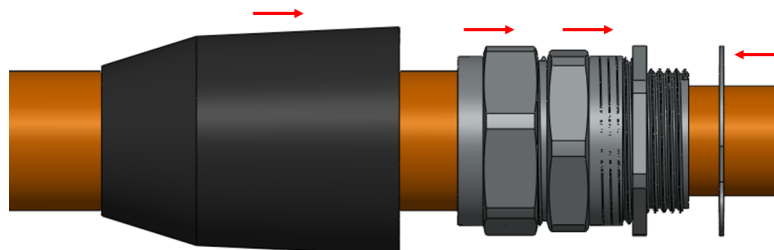
4. Slide the **Entry Body** through the bedding with the cone spreading out the wire armour.



5. Slide the **Clamp Ring** over the armour, so that the armour is locked in-between the ring and cone of the **Entry Body**.



6. Screw the **Gland Body** to the **Entry Body** and then the **Sealing Nut** onto the **Gland Body**. Tighten both connections using a spanner. Tighten the **Sealing Nut** until it is in contact with the cable outer jacket and then tighten another full turn for a moisture proof seal. Add the **Nylon Washer** to create an IP65 connection. Slide the **Shroud** over the assembly to provide a dust cover.



This Installation Guide was designed with great care and proper testing before publication to ensure the product works perfectly with TriCab flexible cables. TriCab is not liable for any errors, omissions, damages etc. due to improper use of this product, included but not limited to improper installation deviating from this Guide, safety and warning rules violation, using unsuitable cable other than TriCab flexible cable. TriCab reserves the right to modify this Installation Guide at any time without prior notice.