

TriCab Stainless Glands are precision engineered from 316 Stainless Steel and suitable for weather proof enclosures and harsh environment.

Typical applications include:

- Marine/Offshore
- Food/Beverage
- Pharmaceuticals

Standards

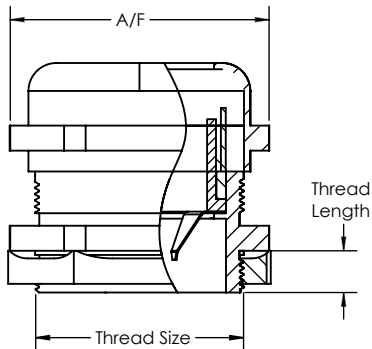
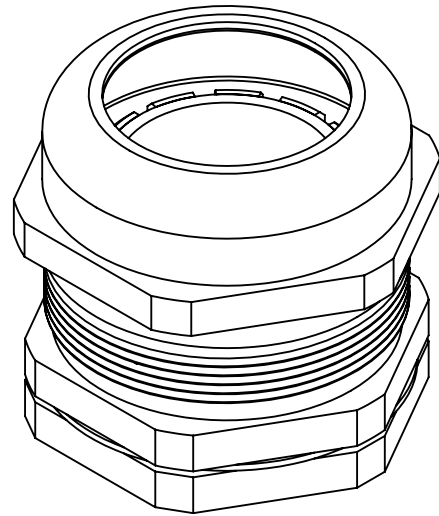
- AS/NZS 60529, IEC 60529, EN 60529

Materials

- 316 Stainless Steel Body
- Nylon PA66 claw
- Nitrile Butadiene Rubber (NBR) seal and O-ring

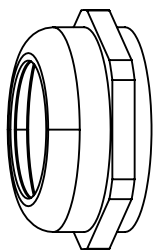
Operating Temperature

- -40°C to 110°C
- -40°F to 230°F

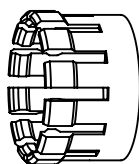


Product Code	Range of Cable Dia (mm)	Thread Type	Thread Length (mm)	Wrench A/F Size(mm) Sealing Nut/Body/Lock Nut
D02-AHXX/12F6	2-6.5	M12x1.5	7.0	22/22/20
D02-AGXX/16F10	6-10	M16x1.5	9.0	22/22/20
D02-AGXX/20F14	9-14	M20x1.5	9.5	26/26/26
D02-AGXX/25F18	14-18	M25x1.5	12.0	32/32/32
D02-AGXX/32F25	18-25	M32x1.5	12.5	40/40/38
D02-AGXX/40F31	24-31	M40x1.5	15.0	50/50/46
D02-ADXX/50F41	31-41	M50x1.5	15.0	60/60/60
D02-ADXX/63F45	35-45	M63x1.5	17.0	75/74/70

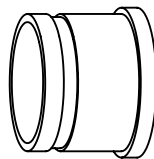
Sealing Nut



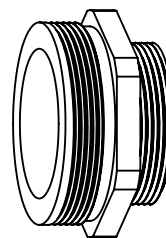
Claw



Seal



Body



Seal Ring

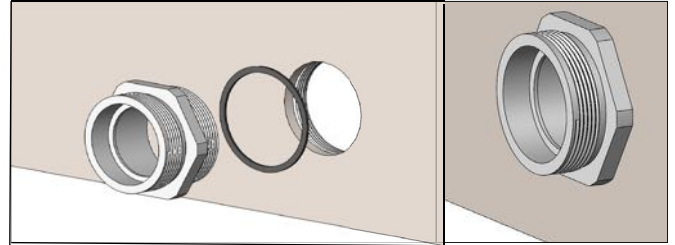


Lock Nut



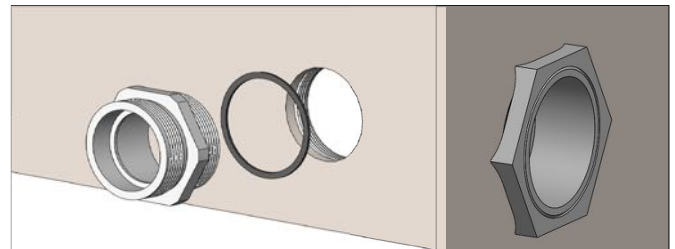
1 Remove **gland body** from **lock nut**, **seal** and **sealing nut**

2 Option 1: Screw the **gland body** with **seal ring** into the corresponding thread hole on gland plate.

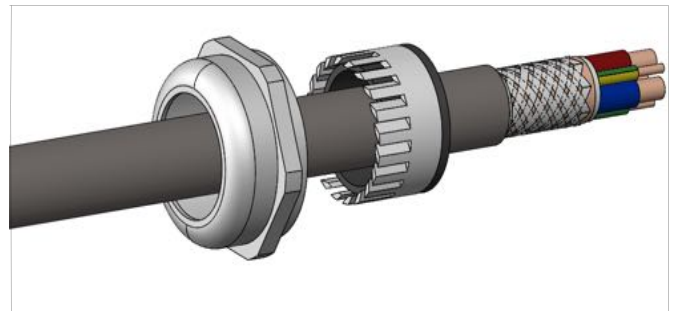


Option 2: Fit the **gland body** with **seal ring** to the clearance hole on gland plate. Use a spanner to tighten the **lock nut** on the other side of gland plate to **gland body**.

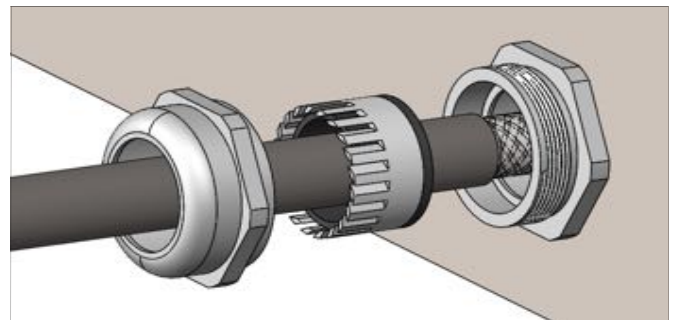
It is recommended that clearance hole diameter should not be more than 0.7mm to major thread diameter on gland to maintain IP rating. Refer to enclosure manufacturer instruction for more detail.



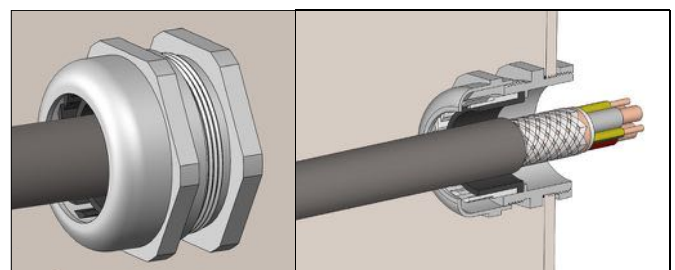
3 Strip the cable at desired lengths. Insert **sealing nut** and **seal** to the cable.



4 Insert cable into the **gland body**. Adjust the **sealing nut** and **seal** to correct position. Adjust the cable in forward direction to make sure the outer sheath completely passed the **seal** section. Manually tighten the **sealing nut** for temporary fixing.



5 Use a spanner to tighten the **sealing nut** until cable is fixed securely. Double check the cable connection and position if necessary.



This Installation Guide was designed with great care and proper testing before publication to ensure the product works perfectly with TriCab flexible cables. However, when using this product with different cables other than TriCab flexible cables, it is sole responsibility of user to make their own tests, calculations to determine the suitability. TriCab is not liable for any errors, omissions, damages etc. due to improper use of this product, included but not limited to improper installation deviating from this Guide, safety and warning rules violation, using unsuitable cable other than TriCab flexible cable. TriCab reserves the right to modify this Installation Guide at any time without prior notice.